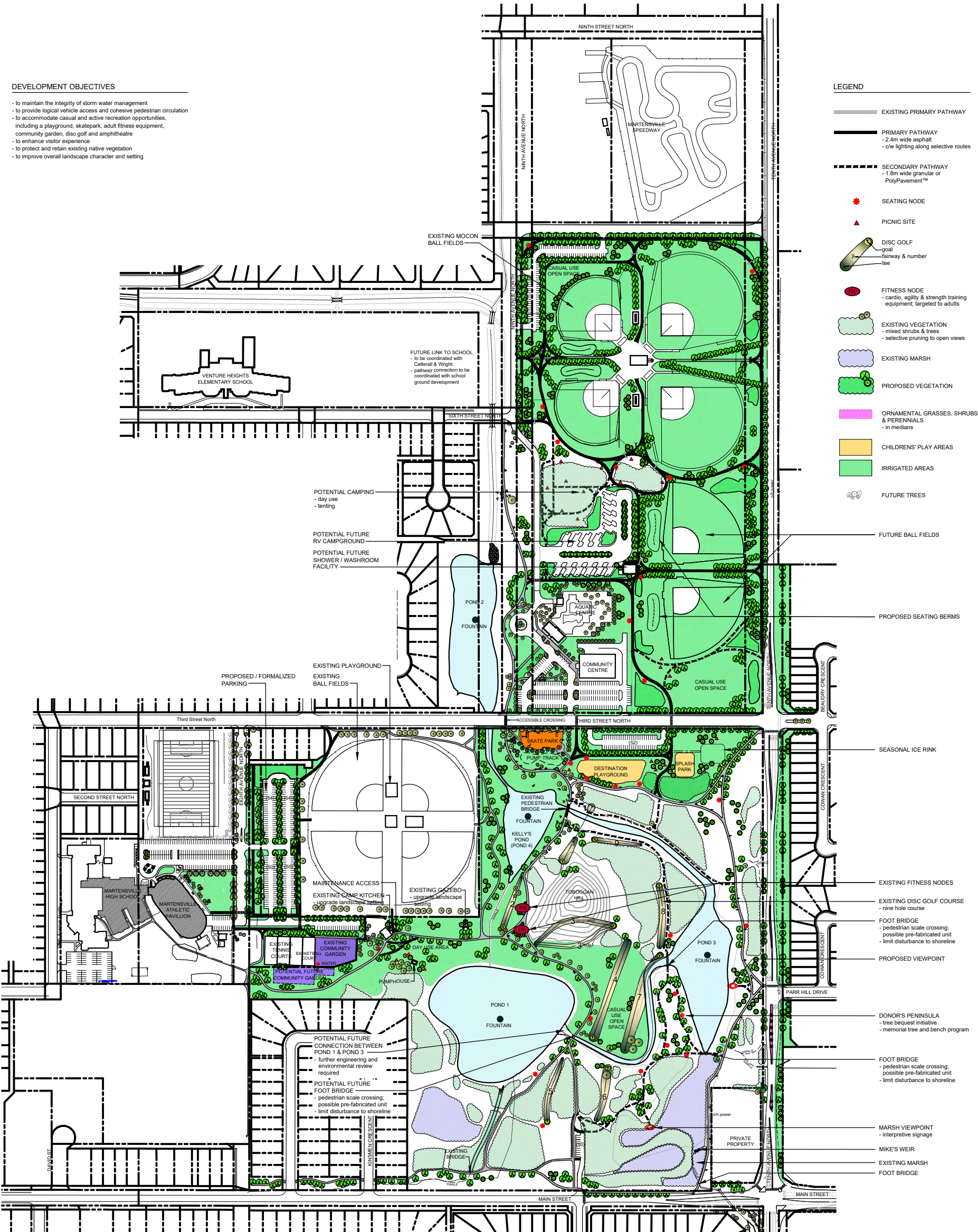
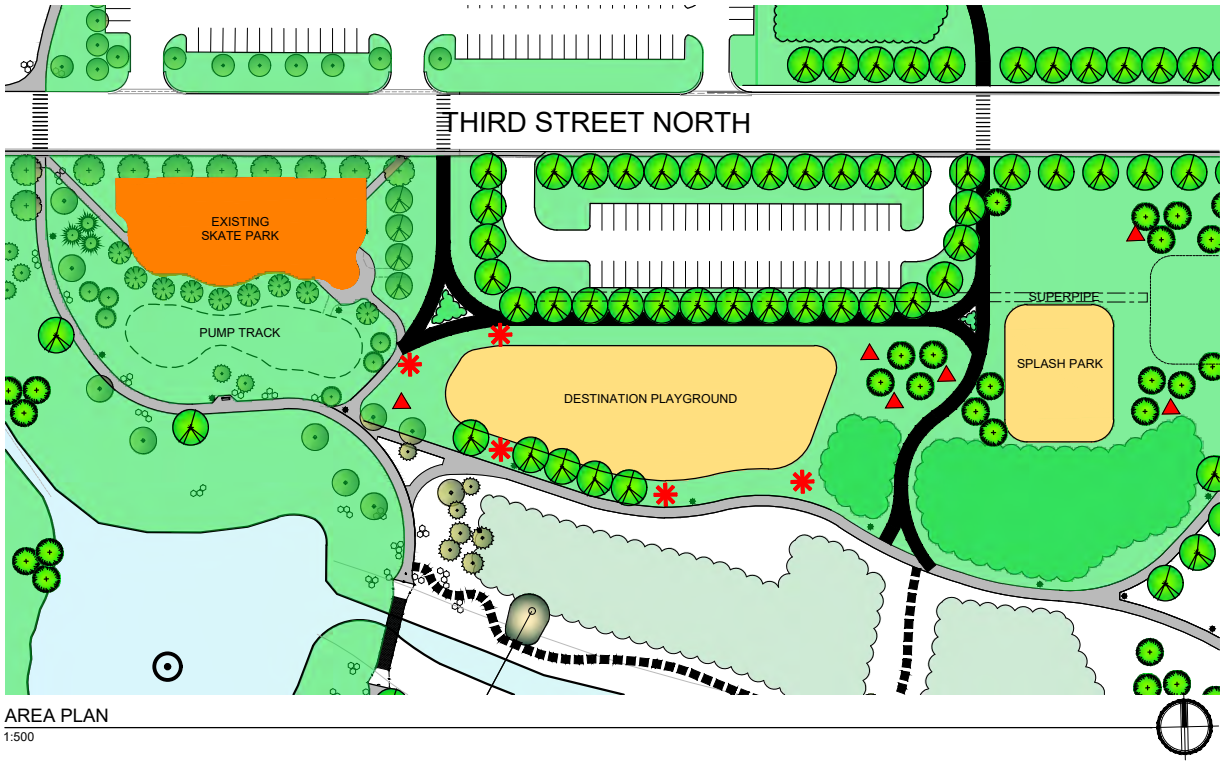


DEVELOPMENT OBJECTIVES

- to maintain the integrity of storm water management
- to provide logical vehicle access and cohesive pedestrian circulation
- to accommodate casual and active recreation opportunities, including a playground, skatepark, adult fitness equipment, community garden, disc golf and amphitheatre
- to enhance visitor experience
- to protect and retain existing native vegetation
- to improve overall landscape character and setting





- LEGEND**
- SEATING NODE
 - PICNIC SITE
 - EXISTING VEGETATION - mixed shrubs & trees
 - PROPOSED VEGETATION

- PLAY & RECREATION OBJECTIVES**
- GENERAL**
- to accommodate casual and active recreation opportunities in a well-landscaped setting
 - to enhance visitor experience
 - to encourage inclusive family recreation and fitness by situating facilities within reasonable proximity
- EXISTING SKATE PARK**
- skate park to accommodate various levels of abilities
- ICE RINK**
- informal, seasonal rink with temporary removeable boards
- DESTINATION PLAYGROUND & SPLASH PARK**
- structures for all ages & mobilities, including active, imaginative play & water play
- PUMP TRACK**
- BMX park to accommodate various levels of abilities

DESTINATION PLAY GROUND & SPLASH PARK

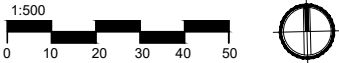


PUMP TRACK



KINSMEN PARK

Active Recreation Area Master Plan

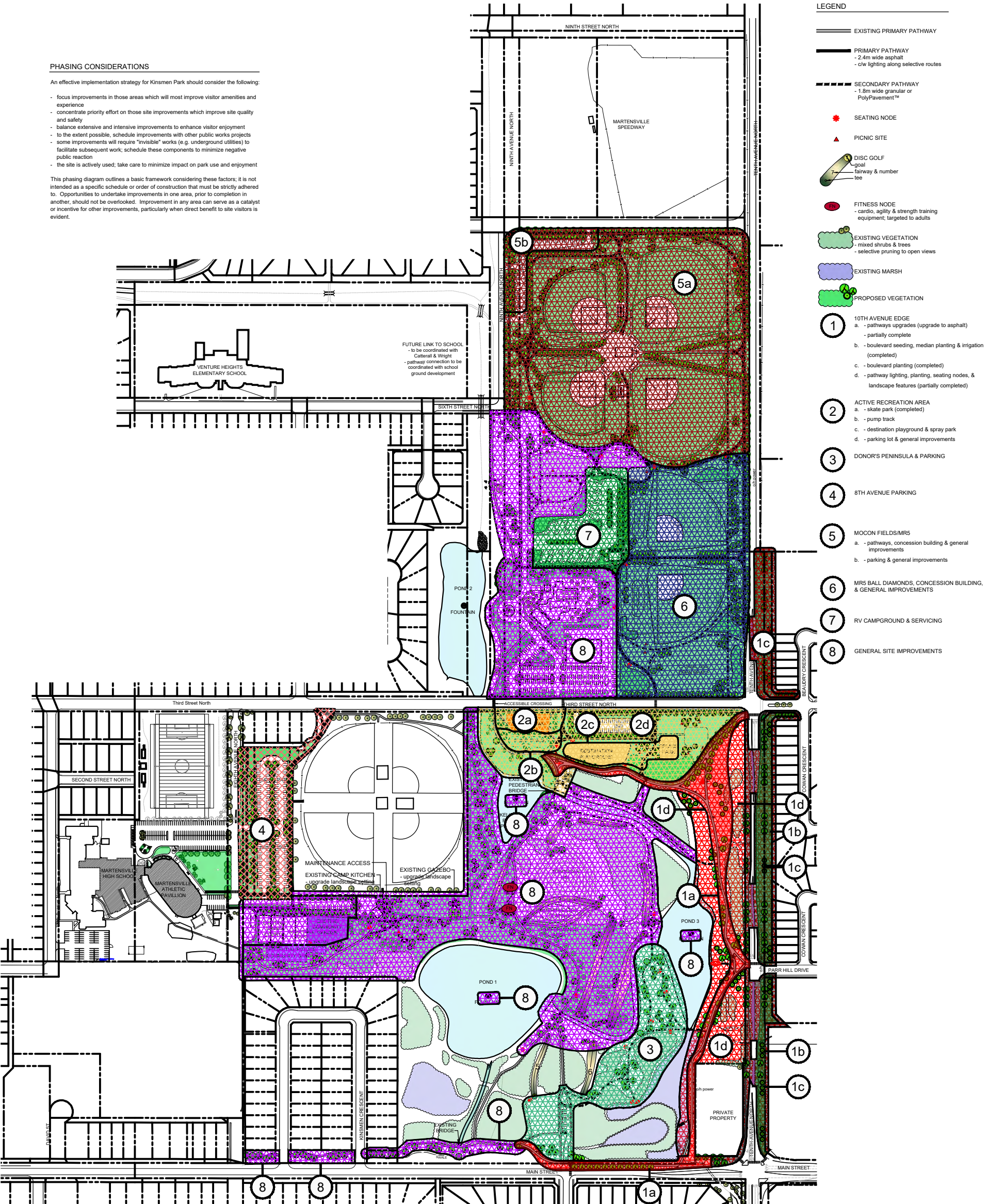


PHASING CONSIDERATIONS

An effective implementation strategy for Kinsmen Park should consider the following:

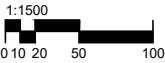
- focus improvements in those areas which will most improve visitor amenities and experience
- concentrate priority effort on those site improvements which improve site quality and safety
- balance extensive and intensive improvements to enhance visitor enjoyment
- to the extent possible, schedule improvements with other public works projects
- some improvements will require "invisible" works (e.g. underground utilities) to facilitate subsequent work; schedule these components to minimize negative public reaction
- the site is actively used; take care to minimize impact on park use and enjoyment

This phasing diagram outlines a basic framework considering these factors; it is not intended as a specific schedule or order of construction that must be strictly adhered to. Opportunities to undertake improvements in one area, prior to completion in another, should not be overlooked. Improvement in any area can serve as a catalyst or incentive for other improvements, particularly when direct benefit to site visitors is evident.



KINSMEN PARK

Phasing



IRRIGATION DEVELOPMENT OBJECTIVES

- to maintain the integrity of storm water management
 - to support both planted & existing vegetation
 - to enhance visitor experience
 - to protect and retain existing native vegetation
 - to improve overall landscape character and setting
- irrigation installation can be phased similar to park phasing; see P-3



KINSMEN PARK

Irrigation Extents

1:1500
0 10 20 50 100



CHA 19020
2019/07/17 (PRINTED 2019/10/29)
1:1500 (FULL SIZE 36X48)

P-4