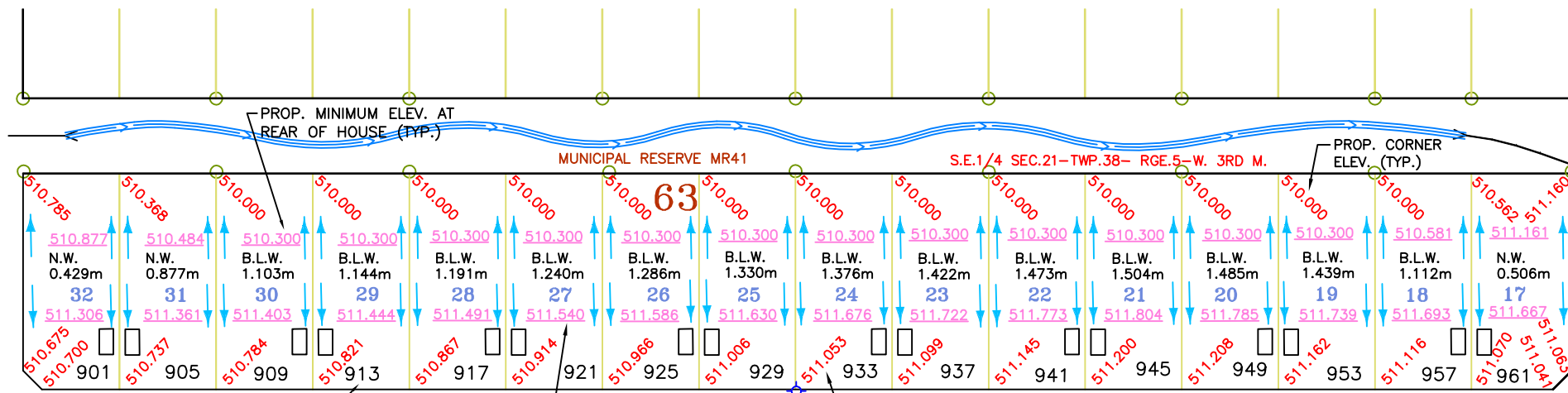
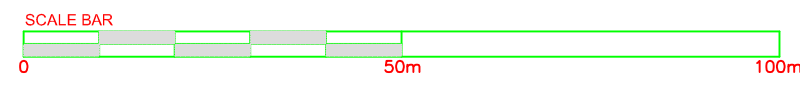
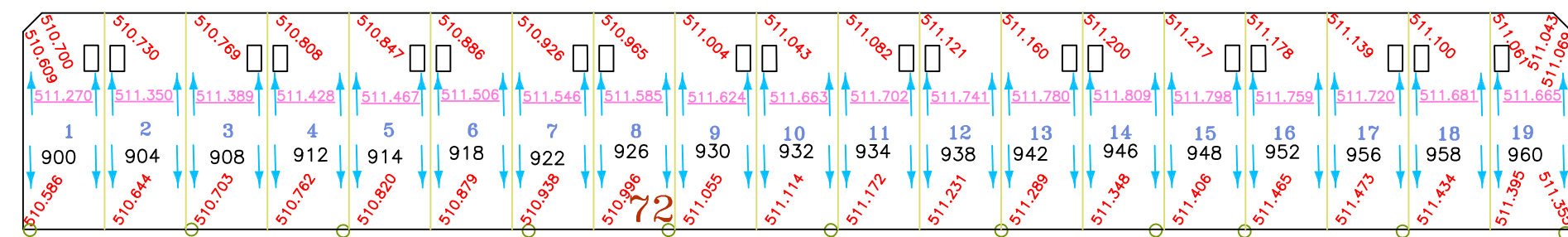
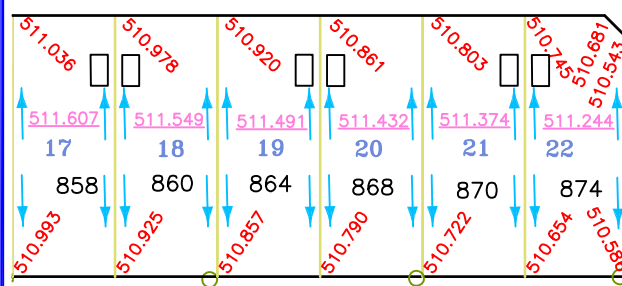


NINTH AVENUE SOUTH



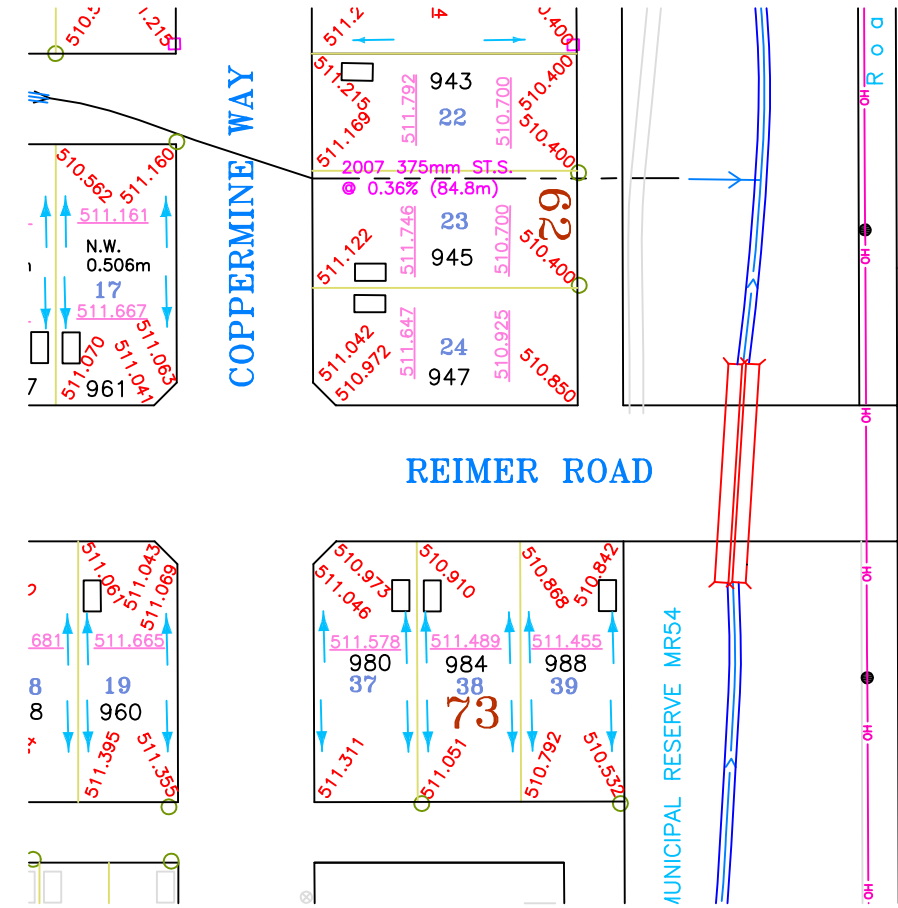
REIMER ROAD

REIMER ROAD



- LEGEND:**
- LOT DRAINAGE
  - LOT GRADE PILE
  - DRAINAGE CHANNEL
  - B.L.W.
  - N.W.
  - CURB STOP
  - GARAGE LOCATION

**BENCHMARKS**  
 TOP NUT OF HYDRANTS:  
 9TH AVENUE SOUTH & REIMER ROAD = 511.610  
 REIMER ROAD & COPPERMINE WAY = 511.615



**CATTERALL & WRIGHT**  
 CONSULTING ENGINEERS  
 1221 - 8th Street East  
 SASKATOON SK S7H 0S5  
 Tel: (306) 343-7280, Fax: (306) 956-3199

SCALE VERIFICATION	
WHEN DRAWING IS PLOTTED FULL SIZE THIS LINE IS 30mm IN LENGTH.	
DATE	REVISION
11/01/04	LOT GRADE PILE RECORD DWG
10/07/22	ISSUED FOR CONSTRUCTION
09/06/11	ISSUED FOR REVIEW
08/12/12	ISSUED FOR REVIEW
PROJECT	
CITY OF MARTENSVILLE	
NORTH RIDGE DEVELOPMENT CORP. THE MEADOWS	
SHEET TITLE	
REIMER ROAD EAST	
LOT GRADE PLAN	
SCALE	DESIGNED
1:1000	C.B.
DRAWN	CHECKED
R.J.R.	C.B.
DATE	SHEET
09/04/01	1 OF 2
DRAWING NUMBER	
225-058LGP2	