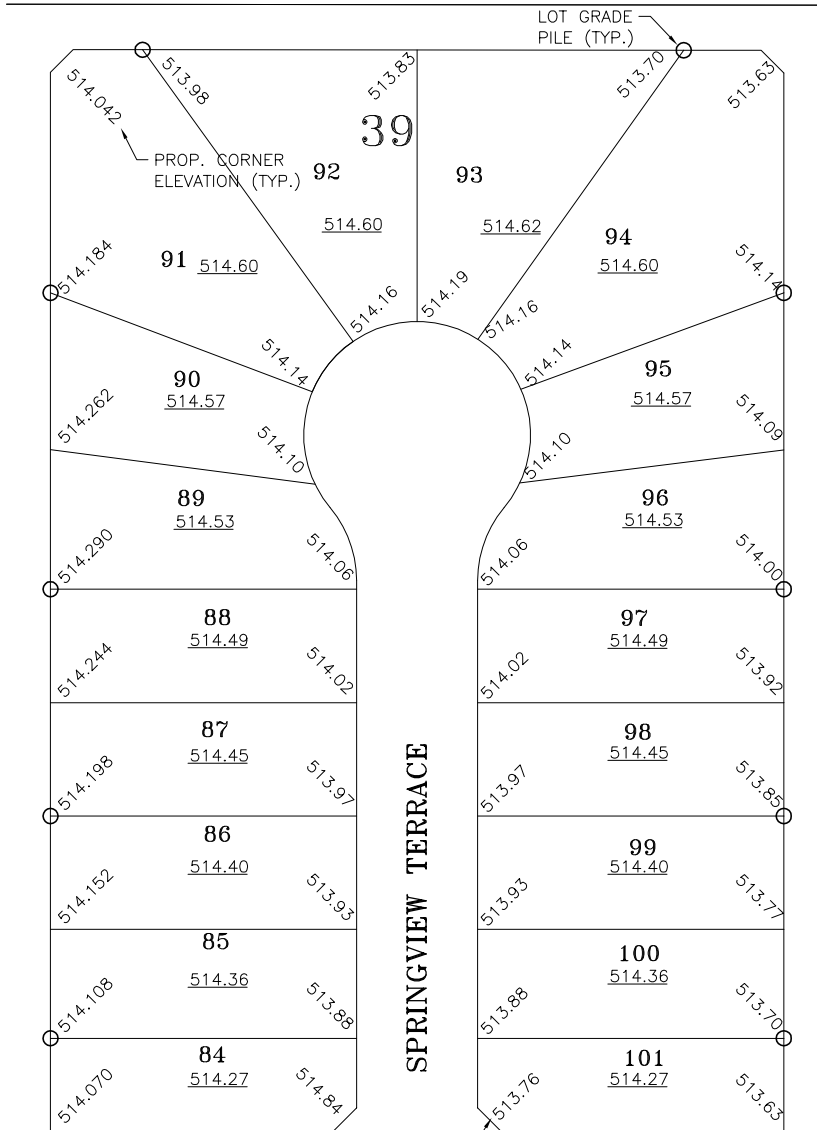
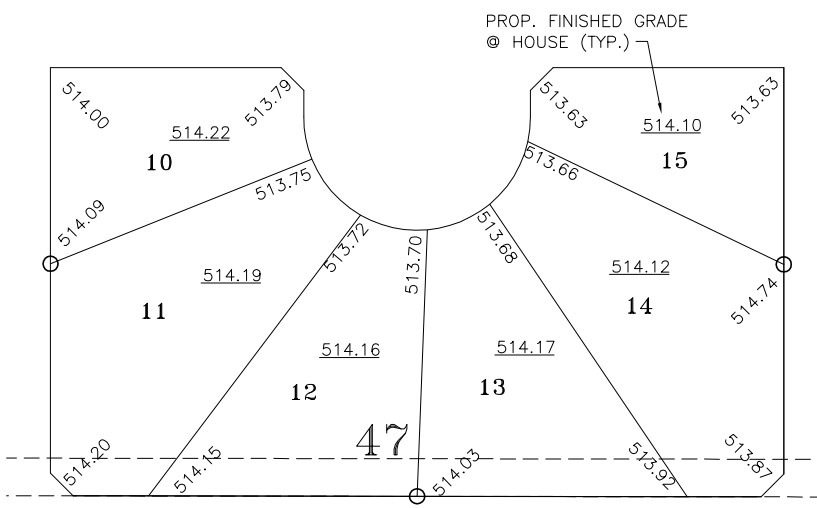


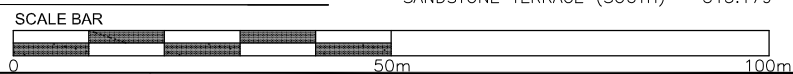
K:\North Ridge - 225.035 - Mills - Springview Terrace - MGS\Working Drawings\225-360-1602.dwg 27/06/07 - 1:33 P



REDDEKOPP DRIVE
 PROP. BACK OF WALK ELEVATION (TYP.)



BENCHMARKS (MAY 2006)
 TOP NUT OF HYDRANT:
 REDDEKOPP & MAPLE RIDGE = 514.750
 SANDSTONE TERRACE (NORTH) = 515.725
 SANDSTONE TERRACE (SOUTH) = 515.179



07/06/27	ISSUED FOR CONSTRUCTION
DATE	REVISION

CATTERALL & WRIGHT
 CONSULTING ENGINEERS

1221 - 8th Street East
 SASKATOON SK S7H 0S5
 Tel: (306) 343-7280, Fax: (306) 956-3199



PROJECT NORTH RIDGE DEVELOPMENT CORP.
 SPRINGVIEW TERRACE
 MARTENSVILLE, SK

SHEET TITLE
LOT GRADE PLAN

SCALE 1:1000	DESIGNED
DRAWN K.R.S.	CHECKED
DATE 07/03/15	SHEET 1 of 1
DRAWING NUMBER 225-3702	