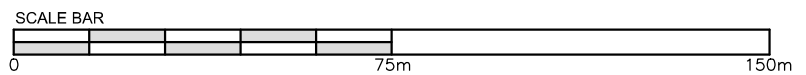
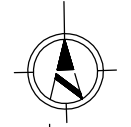
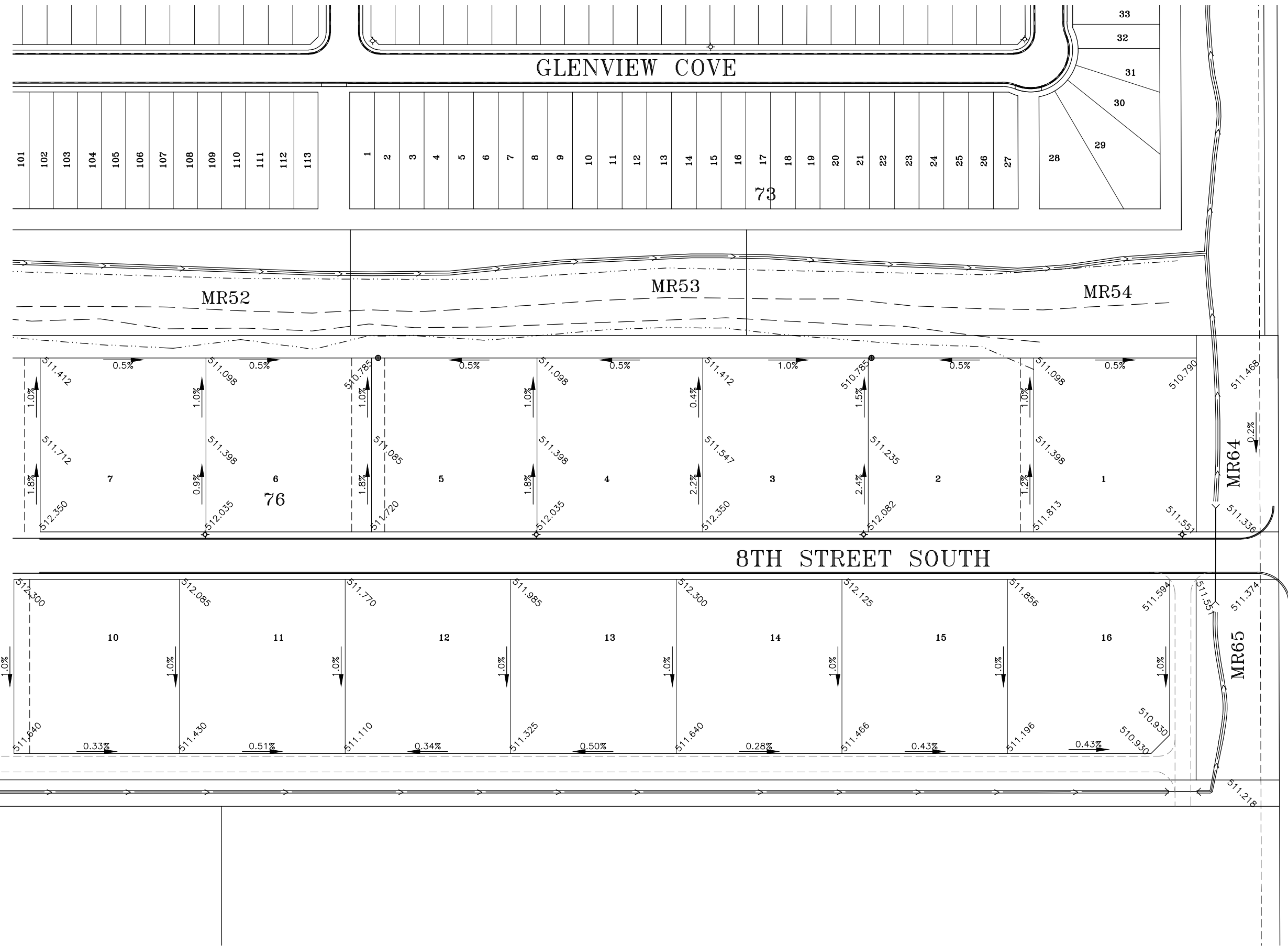


N:\North Ridge - 225\129 - Millie - South Industrial M&S 2013\Working Drawings\225-12901-04.dwg 28/03/19 - 304 P



**CATTERALL & WRIGHT**  
CONSULTING ENGINEERS  
1221 - 8th Street East  
SASKATOON SK S7H 0S5  
Tel: (306) 343-7280, Fax: (306) 956-3199



**LEGEND:**

- XXX.XXX LOT CORNER ELEVATION
- % DRAINAGE GRADE & DIRECTION
- ⊕ HYDRANT
- CATCH BASIN
- |— CULVERT
- ==||== DRAINAGE DITCH

Association of Professional Engineers & Geoscientists of Saskatchewan  
 CERTIFICATE OF AUTHORIZATION  
 CATTERALL & WRIGHT  
 Number C848  
 Permission to Consult held by:  
 Discipline Sk. Reg. No. Signature  
 CIVIL 15425 *PLS*

SCALE VERIFICATION  
 WHEN DRAWING IS PLOTTED FULL SIZE  
 THIS LINE IS 30mm IN LENGTH.

DATE	REVISION
19/03/28	ISSUED TO COM
18/06/26	ISSUED TO COM
15/10/01	ISSUED TO COM

OWNER  
 101056443 SASKATCHEWAN LTD.  
 o/a NORTH RIDGE  
 DEVELOPMENT CORP.

LOCATION  
 MARTENSVILLE, SK

PROJECT  
 SOUTH INDUSTRIAL  
 PHASE 1  
 STREETS

SHEET TITLE  
 LOT GRADE PLAN

SCALE 1:1500	DESIGNED PLS
DRAWN ERL	CHECKED PLS
DATE 15/10/01	SHEET 1 of 1
DRAWING NUMBER 1225-13407	