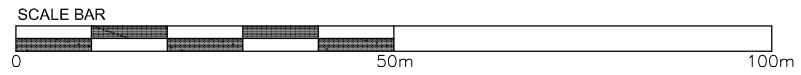
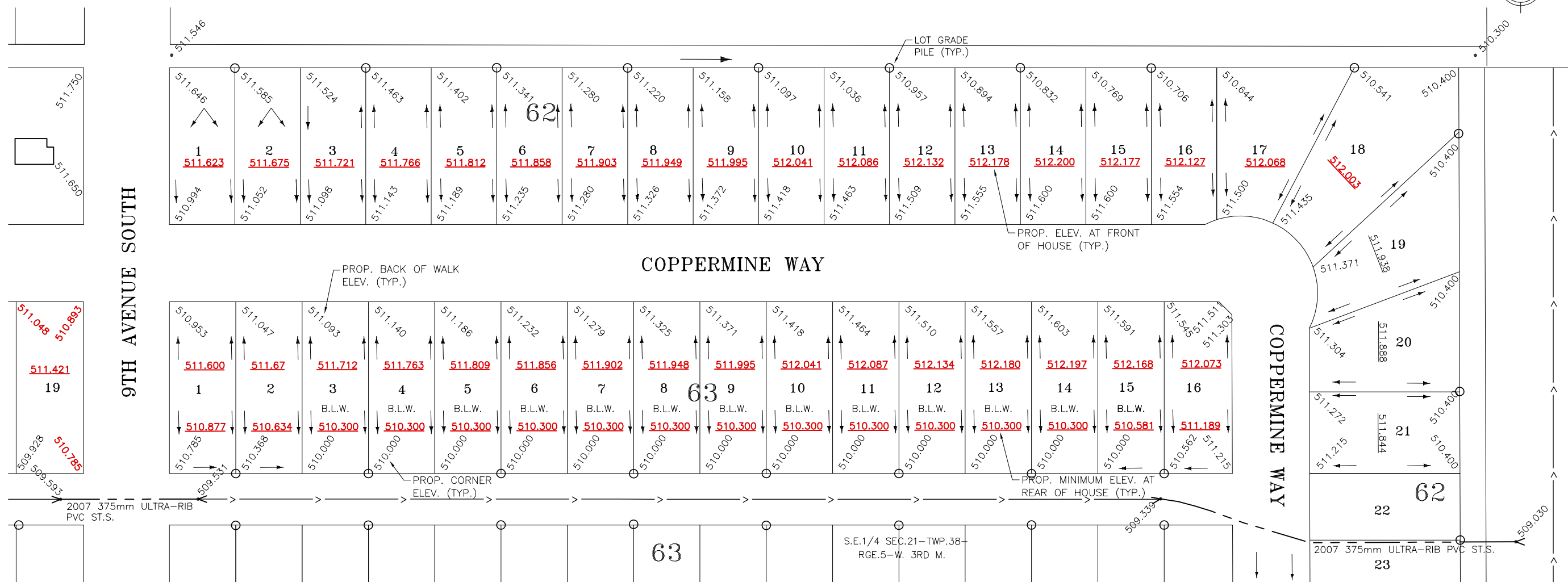
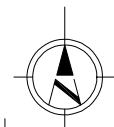




**CATTERALL & WRIGHT**  
CONSULTING ENGINEERS  
1221 - 8th Street East  
SASKATOON SK S7H 0S5  
Tel: (306) 343-7280, Fax: (306) 956-3199



**LEGEND:**

- LOT DRAINAGE
- LOT GRADE PILE
- DRAINAGE CHANNEL
- B.L.W. BI-LEVEL WALKOUT

**BENCHMARKS (AUGUST 2006)**  
TOP NUT OF HYDRANT:  
8th AVENUE SOUTH & COLUMBIA WAY = 512.870  
CLEARWATER BAY = 513.112  
COLUMBIA WAY (BETWEEN LOT 8/9, BLK 56) = 512.501

N:\North Ridge - 225-044 - Millie-Coppermine Way - W&S Working Drawings\225-44-46.dwg 27/03/08 - 8:40 A

DATE	REVISION
08/03/27	ISSUED FOR CONSTRUCTION
08/03/12	ISSUED FOR REVIEW
PROJECT	
TOWN OF MARTENSVILLE	
NORTH RIDGE DEVELOPMENT CORP. COPPERMINE WAY	
SHEET TITLE	
LOT GRADE PLAN	
SCALE	DESIGNED
1:1000	C.R.B.
DRAWN	CHECKED
R.R., C.R.B.	C.R.B.
DATE	SHEET
07/06/29	1 of 1
DRAWING NUMBER	
225-45LGP	