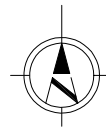
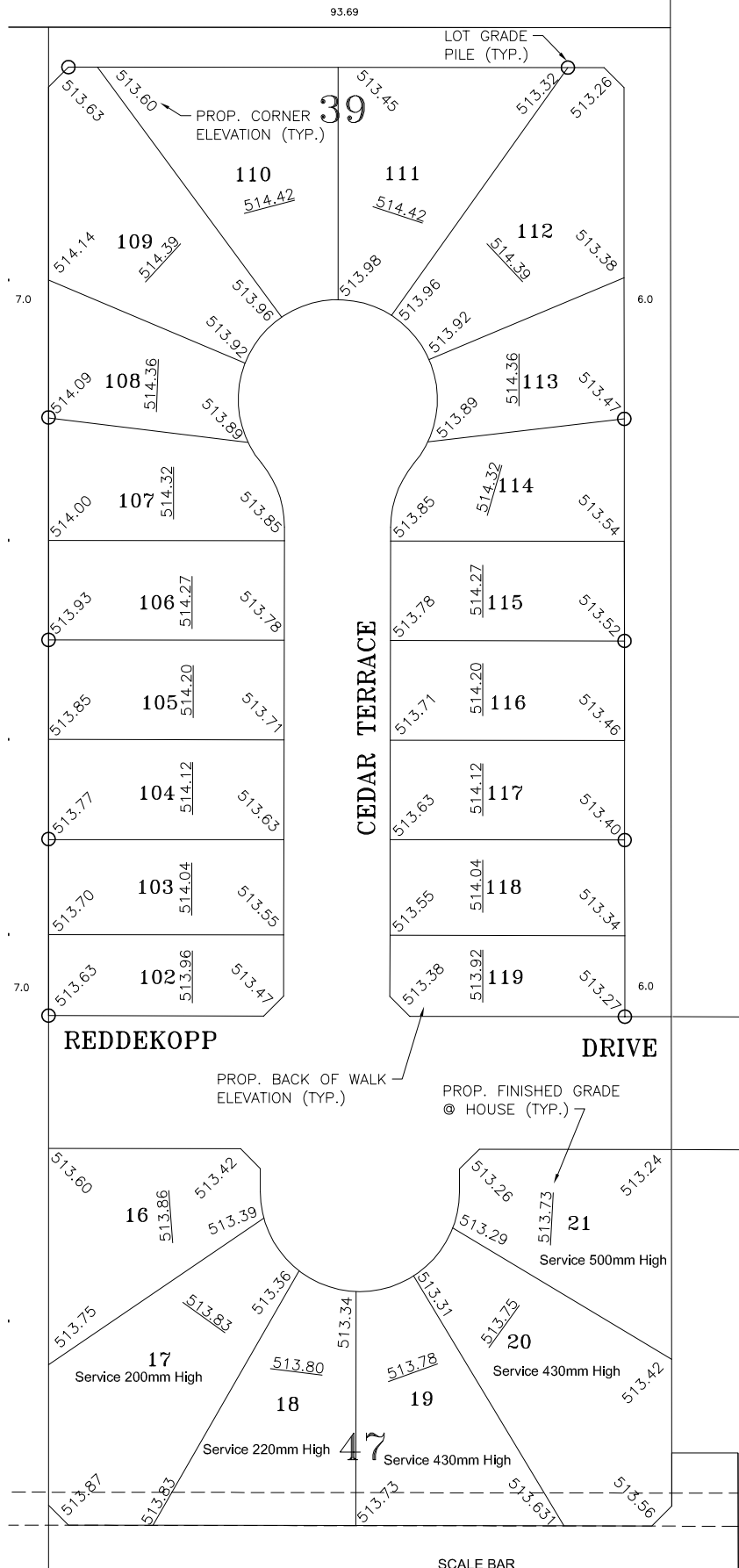
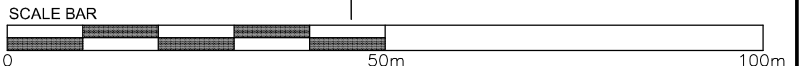


N:\North Ridge - 225\035 - Mile - Springnew Terrace - W&S Working Drawings\225-3501-4002.dwg 10/10/07 - 12:05 P



**BENCHMARKS (MAY 2006)**  
 TOP NUT OF HYDRANT:  
 REDDEKOPP & MAPLE RIDGE = 514.750  
 SANDSTONE TERRACE (NORTH) = 515.725  
 SANDSTONE TERRACE (SOUTH) = 515.179



|          |                         |
|----------|-------------------------|
| 07/10/10 | ISSUED                  |
| 07/06/27 | ISSUED FOR CONSTRUCTION |
| DATE     | REVISION                |

**CATTERALL & WRIGHT**  
 CONSULTING ENGINEERS

1221 - 8th Street East  
 SASKATOON SK S7H 0S5

Tel: (306) 343-7280, Fax: (306) 956-3199

|             |  |
|-------------|--|
| PROJECT     | NORTH RIDGE DEVELOPMENT CORP.<br>CEDAR TERRACE<br>MARTENSVILLE, SK |
| SHEET TITLE | LOT GRADE PLAN   |

|                |          |          |        |
|----------------|----------|----------|--------|
| SCALE          | 1:1000   | DESIGNED |        |
| DRAWN          | K.R.S.   | CHECKED  |        |
| DATE           | 07/03/15 | SHEET    | 1 of 1 |
| DRAWING NUMBER | 225-4002 |          |        |